
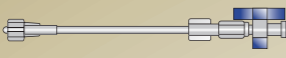
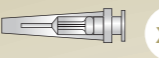
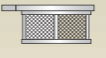


**Eliminate™ components**

- 

x2  
Locking syringes 30 ml polycarbonate
- 

x1  
Extension line with 2-way stopcock
- 

x1  
Flushing tool
- 

x2  
Filter baskets 70 µm

**Ordering information**

Guide catheter compatibility	Eliminate™ with stylet
6Fr (I.D. ≥ 0.70 inch / 1.78 mm)	EG1602
7Fr (I.D. ≥ 0.80 inch / 2.03 mm)	EG1652

**Product specifications**

Tip Length	6 mm
Coating	Hydrophilic
Rapid exchange segment	23 cm
Radiopaque marker band	1 mm located at 4 mm from the tip
Positioning marks	10 cm = single white mark located at 90 cm from distal tip
Wire compatibility	0.014" (0.36 mm)
Catheter length	140 cm

**TERUMO CORPORATION**  
44-1, 2-chome  
Hatagaya  
Shibuya-ku  
Tokyo 151-0072  
Japan  
Tel. +81/3 3374.8111  
Fax +81/3 3374.8196

**European Headquarters and Manufacturing**

**TERUMO EUROPE N.V.**  
Interleuvenlaan 40  
3001 Leuven  
Belgium  
Tel. +32/16.38.12.11  
Fax +32/16.40.02.49

**European Sales Offices**

**TERUMO EUROPE N.V. BENELUX SALES DIVISION**  
Interleuvenlaan 40  
3001 Leuven  
Belgium  
Tel. +32/16.39.25.80  
Fax +32/16.39.25.99

**LABORATOIRES TERUMO FRANCE S.A.**  
Parc Ariane - Bât. Uranus  
1 rue Hélène Boucher  
78284 Guyancourt Cedex  
France  
Tel. +33/1 30.96.13.00  
Fax +33/1 30.43.60.85

**TERUMO DEUTSCHLAND GMBH**  
Zweigniederlassung Wettingen  
Bahnhofstrasse 88  
CH-5430 Wettingen  
Switzerland  
Tel. +41/56.419.10.10  
Fax +41/56.419.10.11

**TERUMO EUROPE ESPAÑA SL**  
Avda. Juan Carlos I,  
Nº 13 - 7ª Planta  
Edificio Torre La Garena  
28806 Alcalá de Henares Spain  
Tel. : +34/902.10.12.98

**TERUMO ITALIA SRL**  
Via Simone Martini 143/145  
I-00142 Roma  
Italy  
Tel. +39/06.519.61.420  
Fax +39/06.503.04.07

**TERUMO DEUTSCHLAND GMBH**  
Hauptstrasse 87  
65760 Eschborn  
Germany  
Tel. +49/61.96.80.230  
Fax +49/61.96.80.23.200

**TERUMO SWEDEN AB**  
Nya Varvet, Byggnad 90  
Sven Källfältts Gata 18  
SE-426 71 Västra Frölunda  
Sweden  
Tel. +46/31.748.58.80  
Fax +46/31.748.58.90

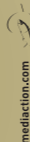
**TERUMO UK LTD**  
Tamesis, The Causeway  
Egham, Surrey  
TW20 9AW  
United Kingdom  
Tel. +44/1784.476.200  
Fax +44/1784.476.201

**Terumo Representative Office in Russia**  
**TERUMO EUROPE N.V.**  
Moscow Representative office  
4, Ivana Franko St  
121108 Moscow  
Russia  
Tel. +7/495.234.3303  
Fax. +7/495.234.3303

TM : Registered Trademark of Terumo Clinical Supply Corporation - Published by Terumo Europe N.V.  
[www.terumo-europe.com](http://www.terumo-europe.com)  
Addresses are subject to change, please consult our website.



IS200GET1.09MID10110JE



► The deliverable solution for thrombus removal ◀

## The deliverable solution for thrombus removal

Eliminate™ is an innovative aspiration catheter designed to offer an **optimal balance** between **crossing performance**, **kink resistance** and **thrombo-aspiration capability**

### >>> Deliverability

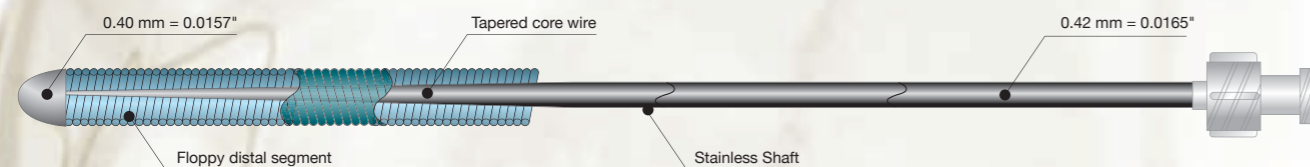
Eliminate's innovative technology provides improved deliverability and kink resistance

- **Pre-loaded stylet** provides improved pushability and ensures optimal crossability in difficult to cross scenarios
- **Fully braided shaft construction** for improved kink resistance of the catheter
- **23 cm long rapid exchange segment** provides improved trackability
- **Hydrophilic coating** facilitates easy navigation through tortuous anatomies

Stiffening stylet with floppy distal segment



Fully braided shaft



143 cm stiffening stylet

### 6 Fr guide catheter compatibility

Distal part



Extraction area  
0.78 mm<sup>2</sup>

Proximal part



Extraction area  
0.95 mm<sup>2</sup>

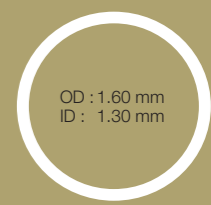
### 7 Fr guide catheter compatibility

Distal part



Extraction area  
1.23 mm<sup>2</sup>

Proximal part

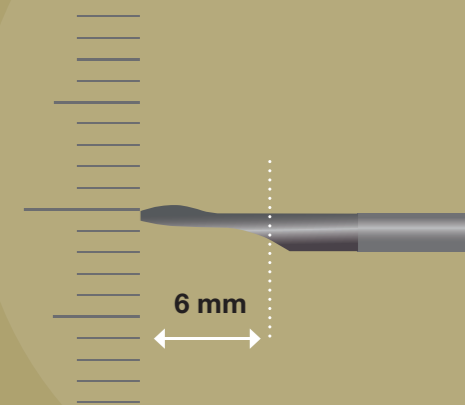


Extraction area  
1.32 mm<sup>2</sup>

### >>> Aspiration Capability

Advanced technology provides enhanced aspiration

- **Large extraction lumen** and the braided shaft construction ensures constant aspiration performance throughout the procedure
- **Rounded and short tip design** preserves crossability, while providing safe and effective aspiration
- A choice of **2 sizes** (6 Fr or 7 Fr guide catheter compatibility) to meet different clinical scenario



### >>> Ease of Use

Single-handed operator

- **Short and thin distal radiopaque marker** provides an excellent distal visualization and increases distal flexibility
- **Complete kit contains:**
  - 30 ml locking syringes
  - Extension line (25 cm) with 2 way stopcock
  - Filters basket